

Youtube Instructions online now! www.bingtastic.com

Dash Compartment Latch Repair

Suits: **Ford Territory** SX/SY (2004-2009)

Tools Required:

- Phillips head screwdriver (short and stubby is best)
- Flat blade screwdriver (small and sharpish)
- Grease, WD-40 or similar (optional)

Process:

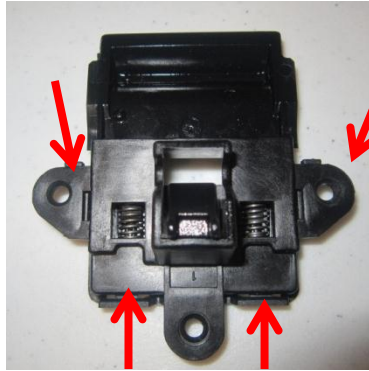
1. Remove compartment upper lid (4 Phillips screws):



2. Remove latch assembly (3 Phillips screws):

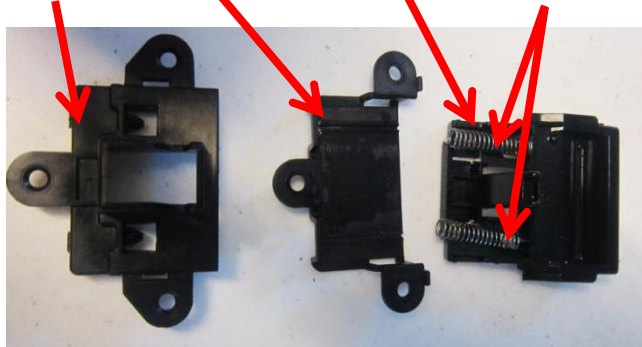


3. Pry latch assembly apart with flat bladed screwdriver. This part may be brittle—be gentle and loosen it slowly.



You end up with:

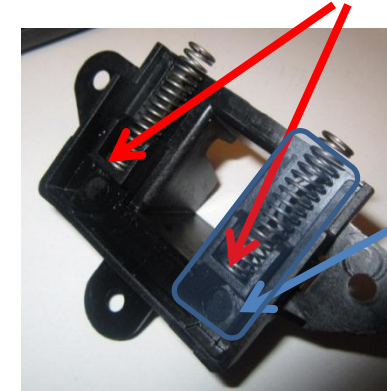
Latch base, Latch cover, Broken latch, and 2 springs.



Below is the broken latch. Throw it away, but keep the springs!

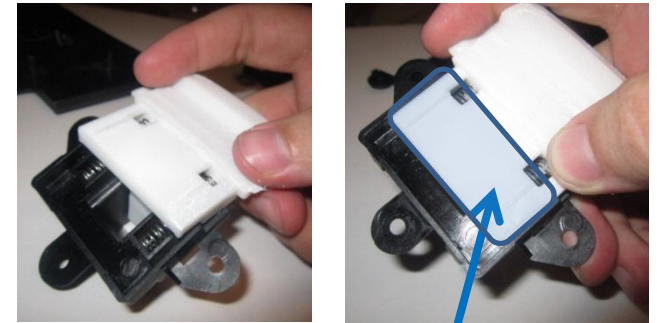


4. Put the springs onto their posts on the old latch base.



(Optional—apply a small amount of grease / WD40 to springs and where the latch slides)

5. Slide new latch on. Ensure springs go onto latch posts. (White part shown for clarity—your new latch is black)



(Optional—apply a small amount of grease / WD40)

6. Clip latch cover back on and screw latch assembly back onto upper lid:



7. Re-attach upper lid to car (see step 1). Done!